

# Light and Shadow

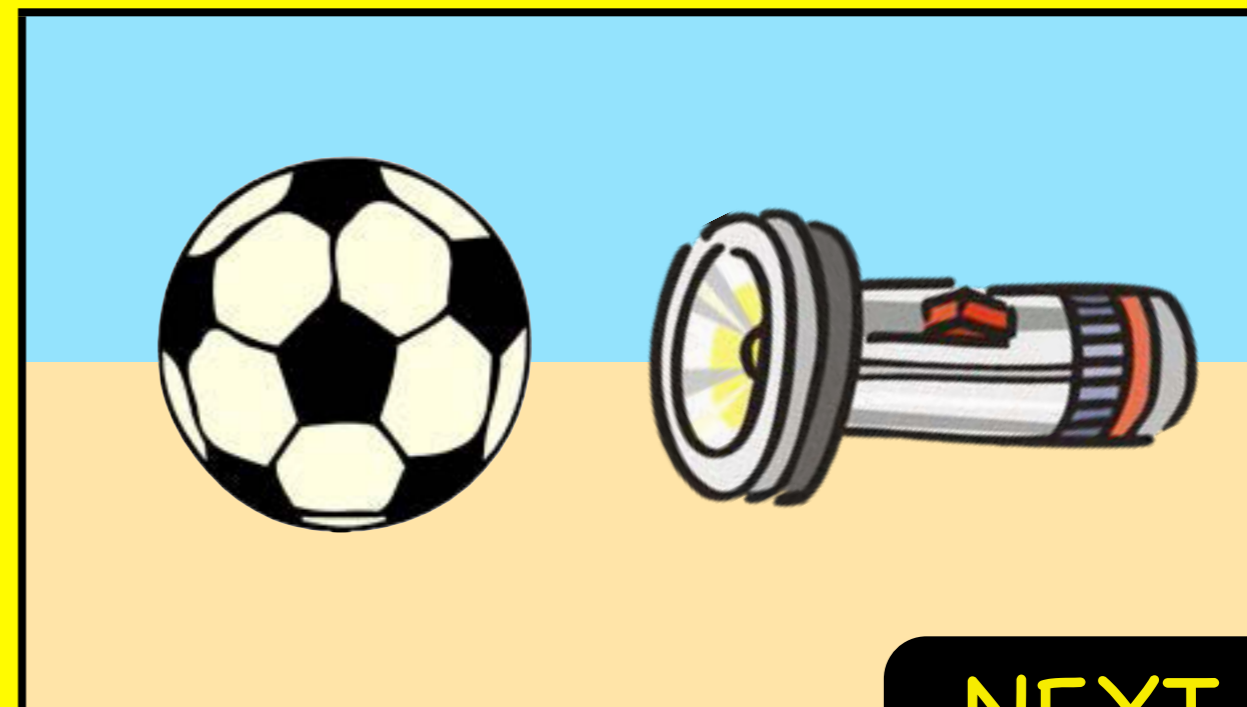
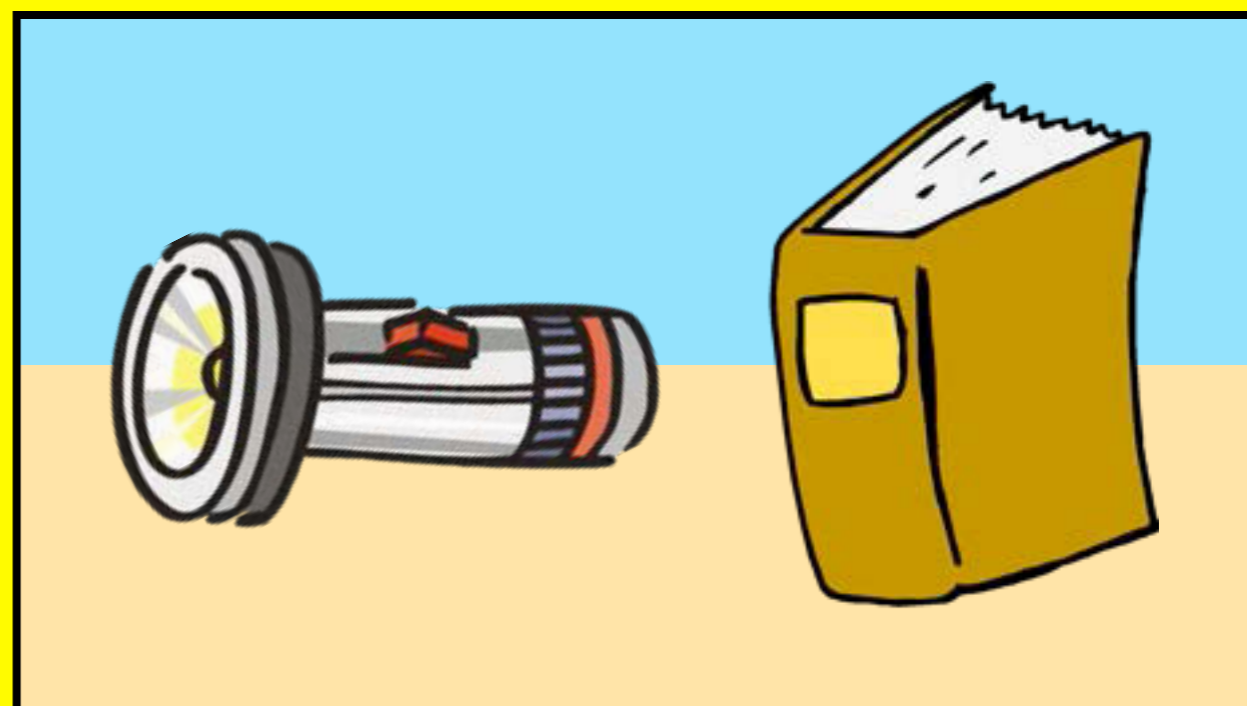
## Learning Objective:

To investigate how shadows behave.

NEXT

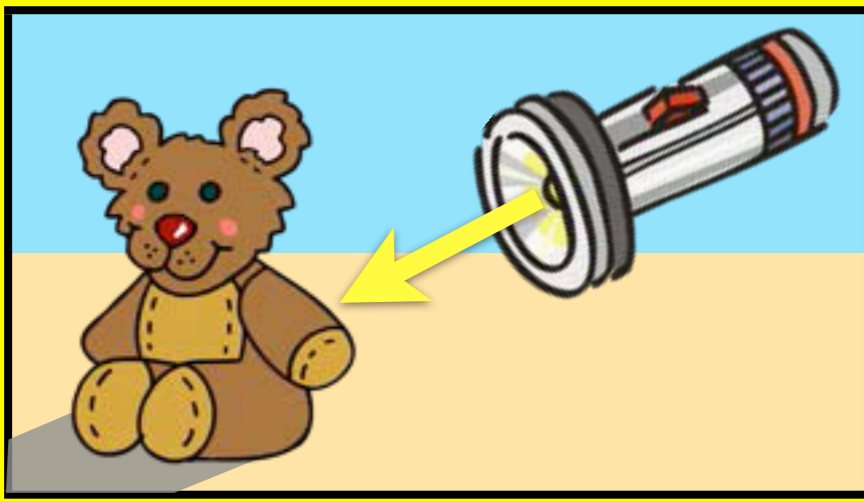


If you turned these torches on, which objects would cast a shadow? Why?

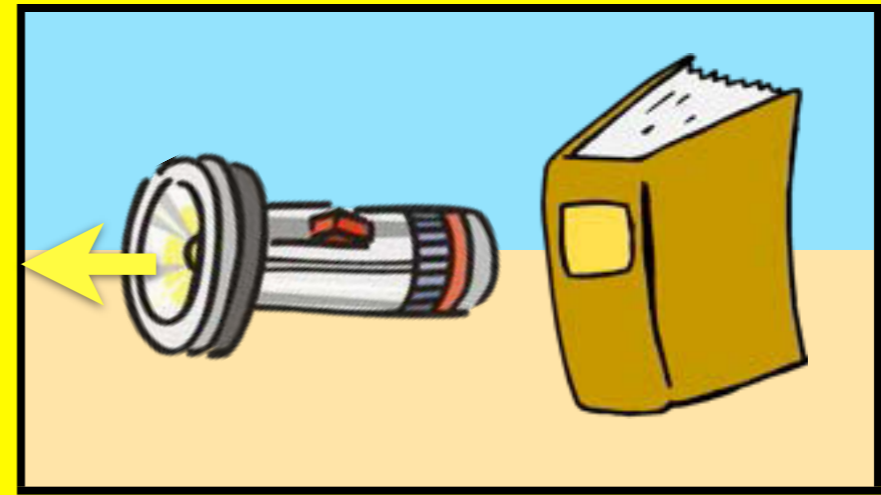


BACK

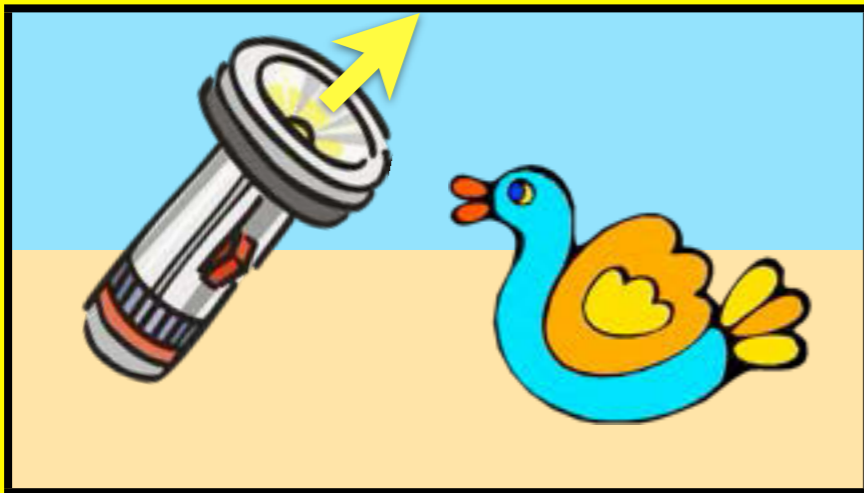
NEXT



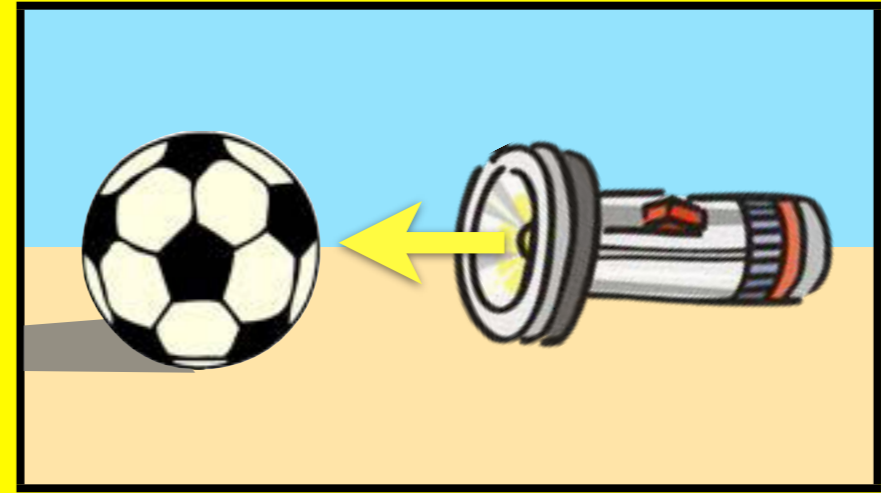
The teddy would cast a shadow because it is blocking the light's path.



The book wouldn't cast a shadow because it isn't blocking the light's path.



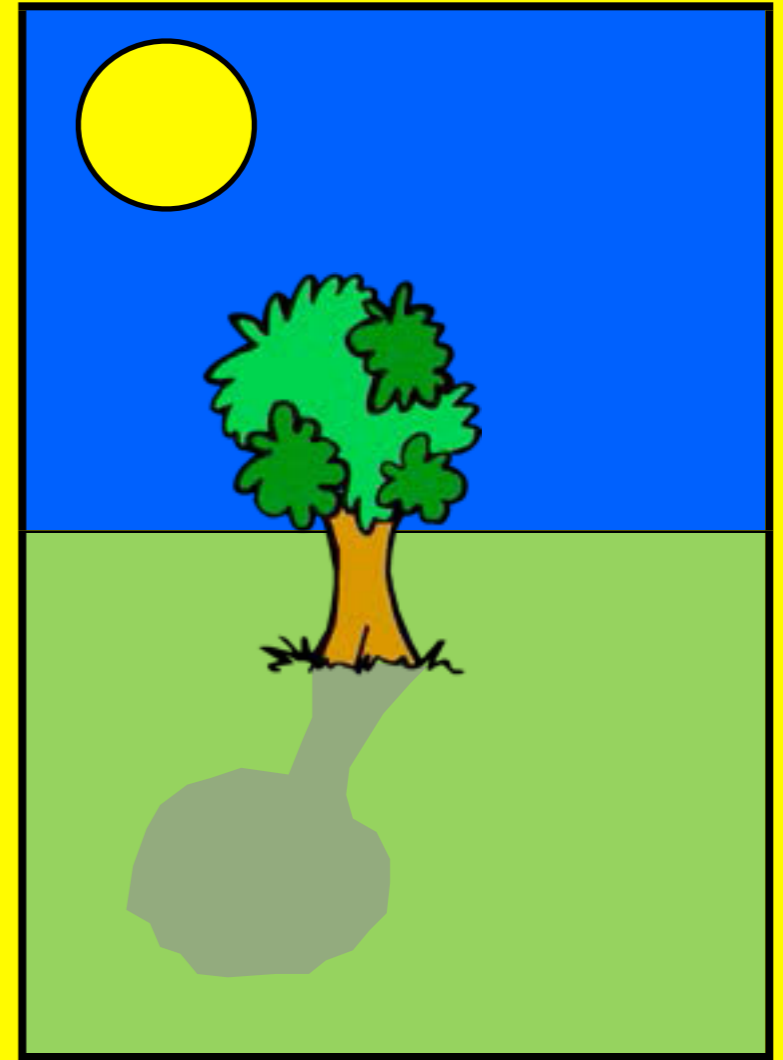
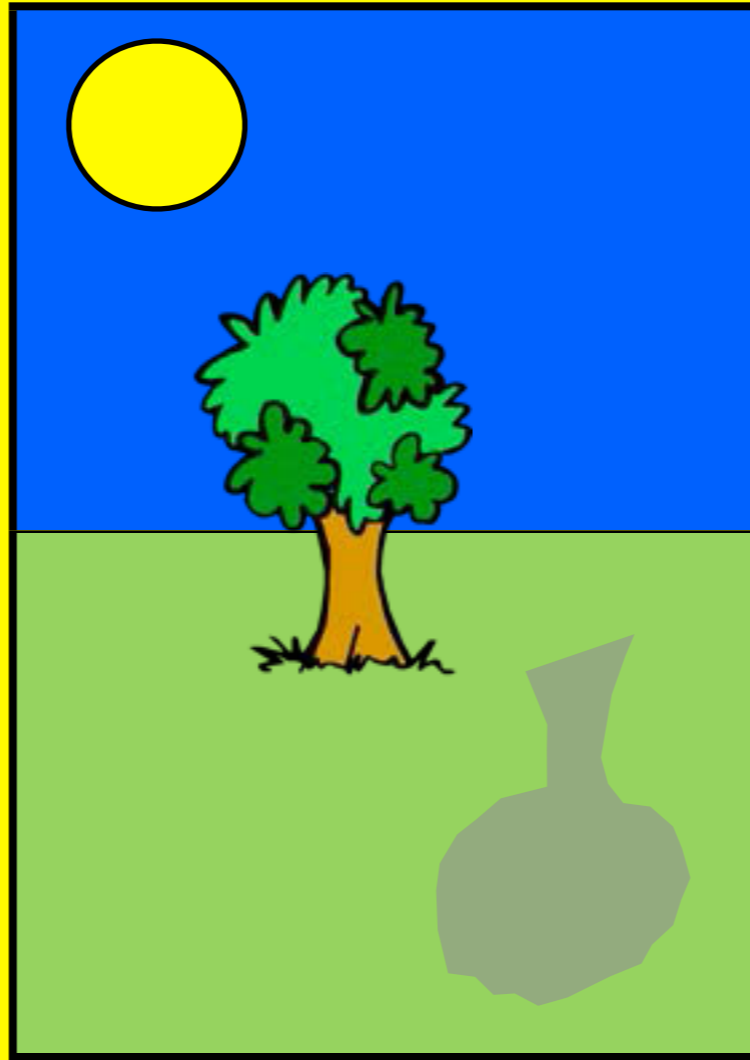
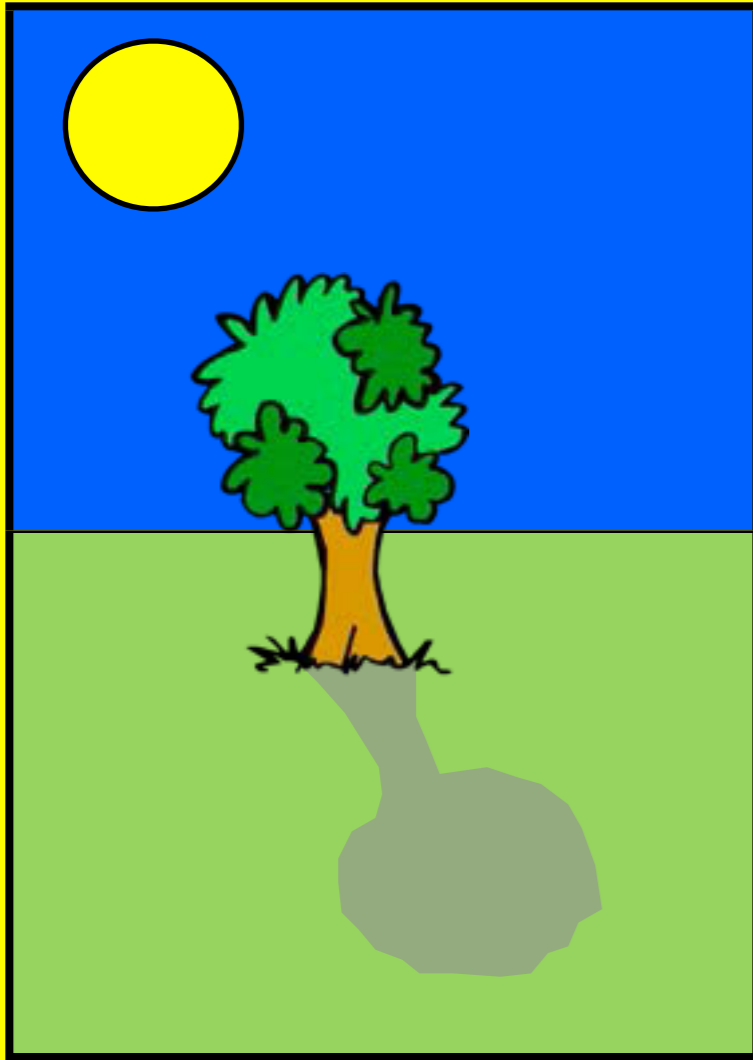
The toy duck wouldn't cast a shadow because it isn't blocking the light's path.



The ball would cast a shadow because it is blocking the light's path.

**BACK**

**NEXT**

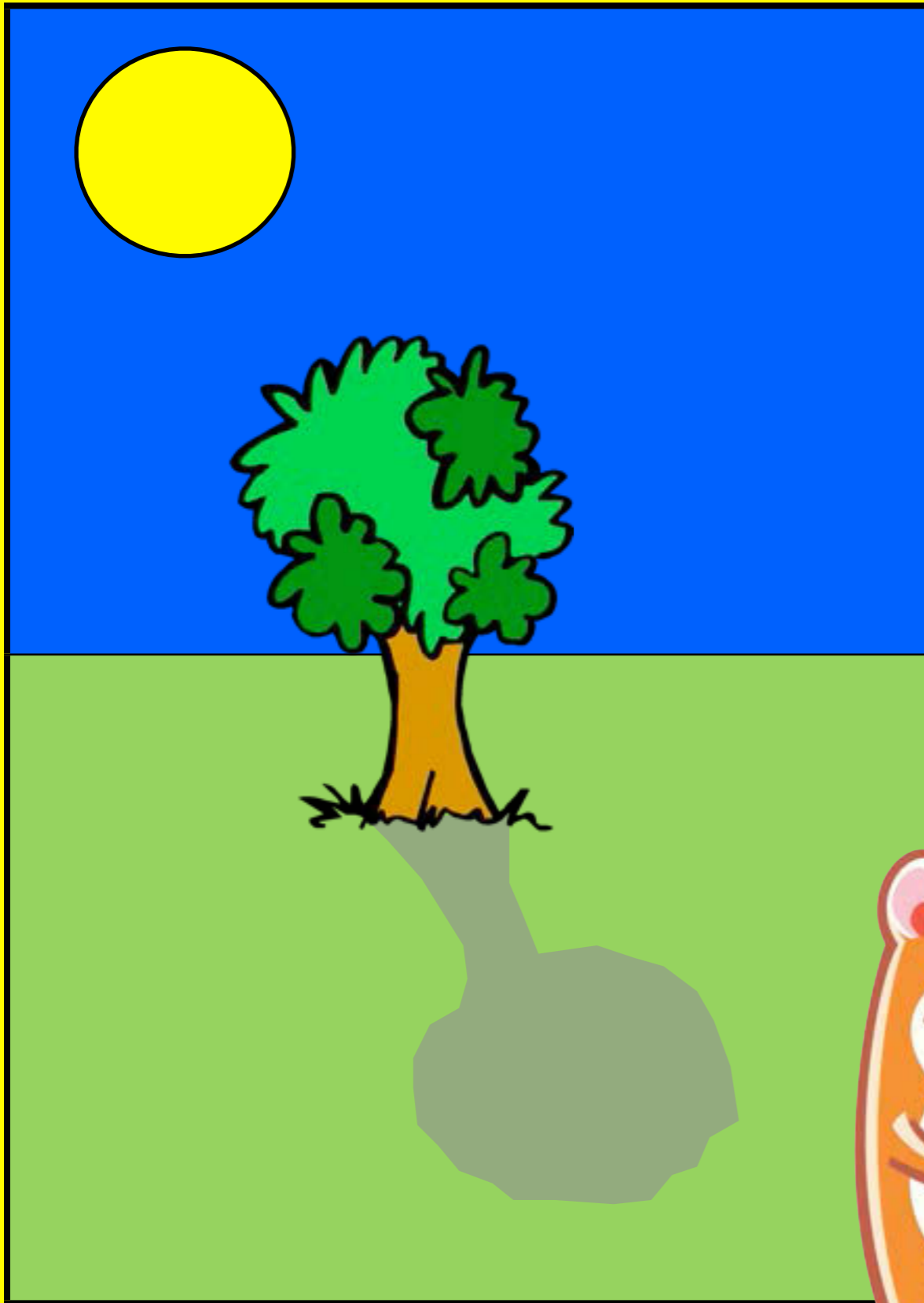


Which of these diagrams do you think is correct? Why?



BACK

NEXT



This is the correct diagram because it shows how the tree is blocking the light's path which casts a shadow.



Well done if you got that right!

BACK

NEXT



Today we are going to be investigating how shadows behave. How do you think we could do this?

BACK

NEXT